

# City of Keene Transportation Heritage Trail

Project #43737/44166

MSFI Meeting  
January 24, 2024  
Keene, NH



# Meeting Purpose

- Review:
  - 12/04/23 Local Concerns Meeting
    - Project Purpose and Need
      - Connectivity
    - Project Overview and Process
    - Overall Takeaways
      - Over 60 Attendees
      - Trail Usage Survey
        - Biking
        - Walking for Exercise
      - Two main concerns
        - Drainage
        - Security/Privacy
  - 1/08/24 Alternatives Meeting
- Project Alternatives
  - Alignments
  - Screening
  - Trailhead/Crossing
  - Trail Surfacing
- Proposed Project Schedule & Next Steps
- Questions

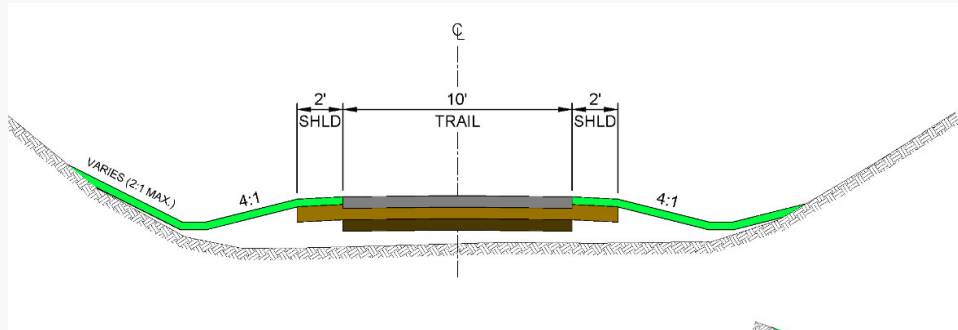




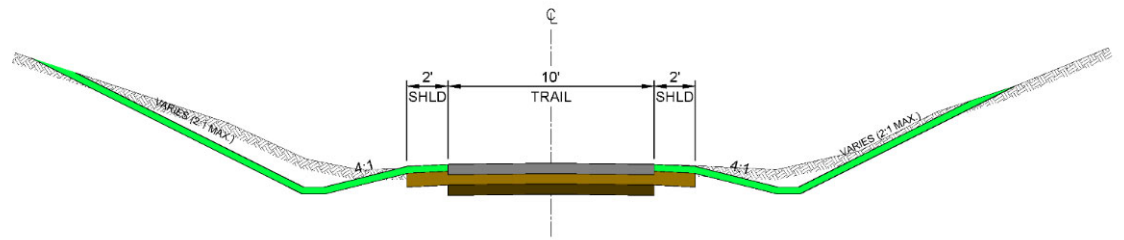




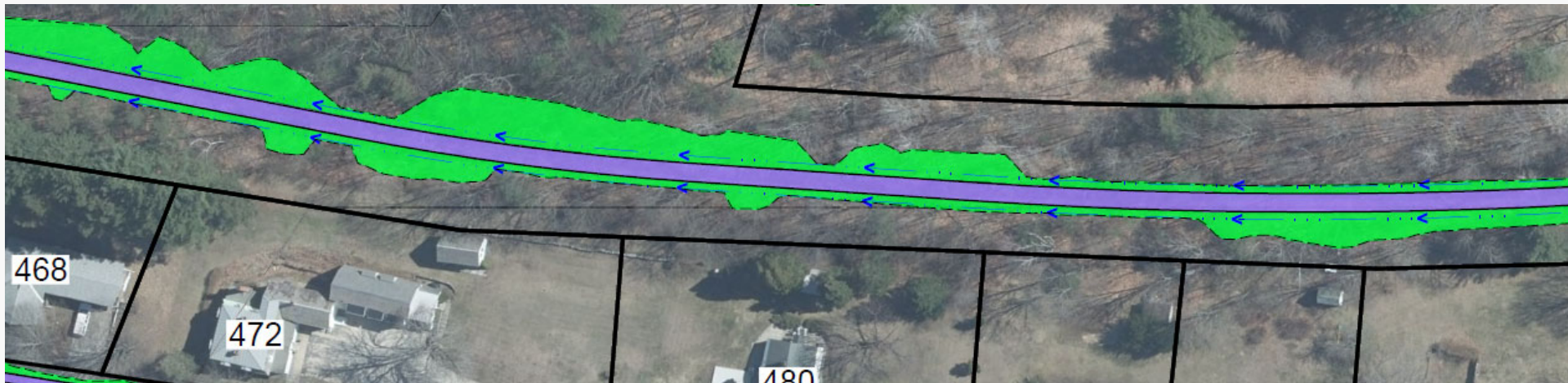
# Project Alternatives – Alignments Railroad Corridor



Raised Profile

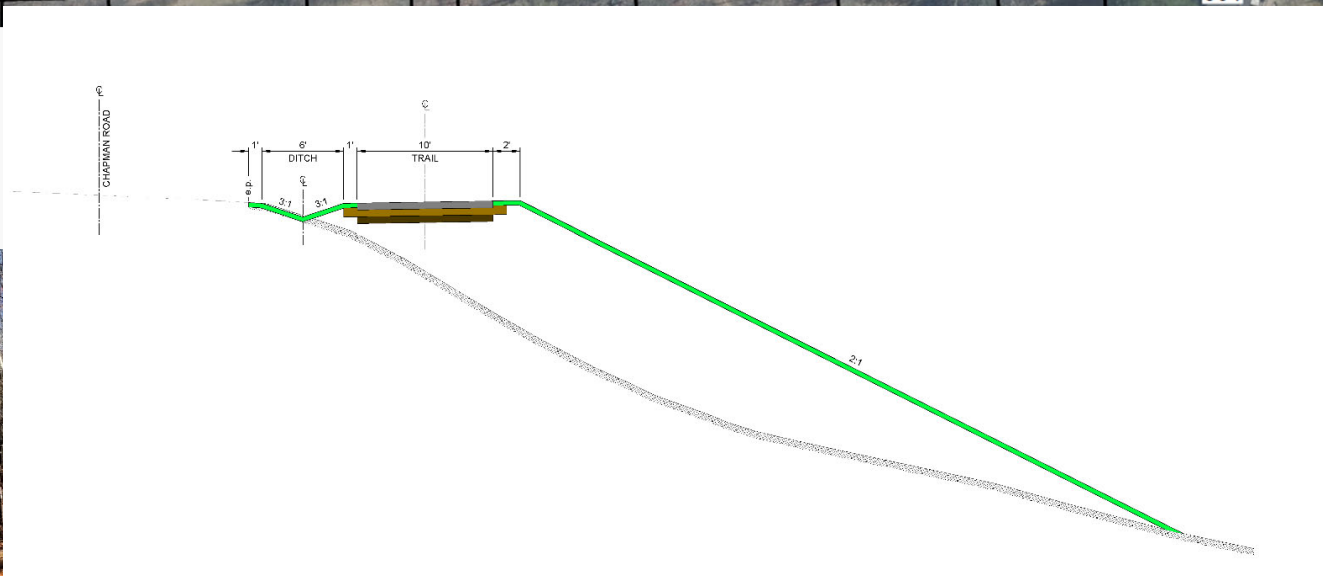
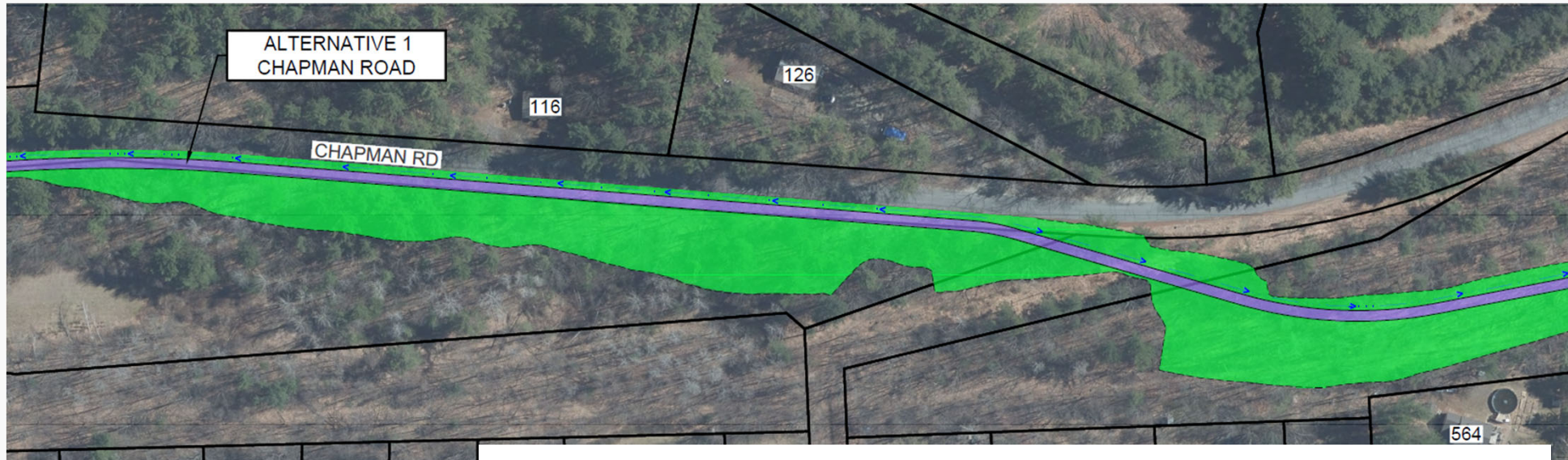


At Existing Grade



# Project Alternatives – Alignments

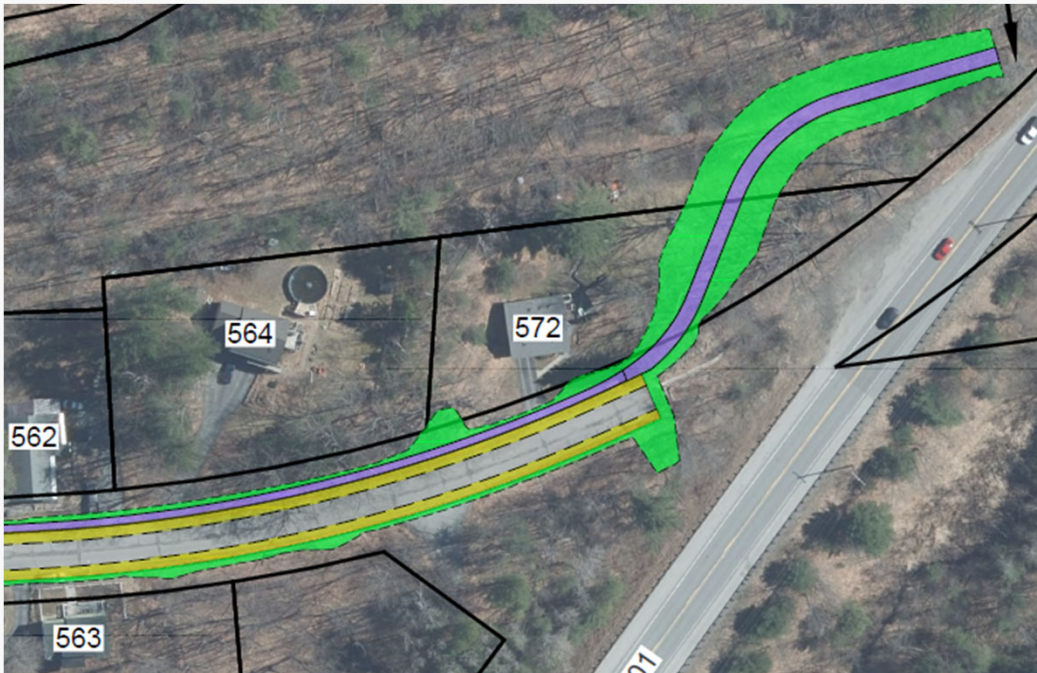
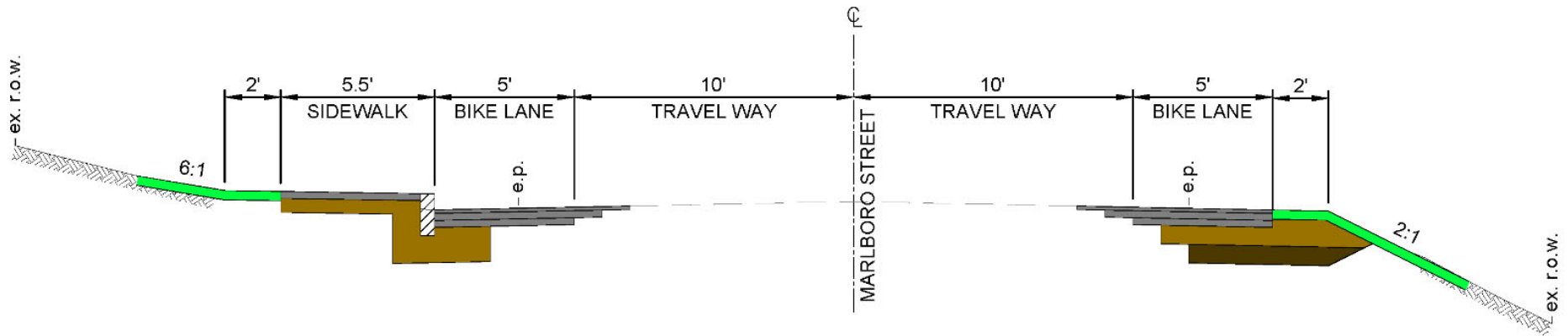
## Alternative 1 – Chapman Road





# Project Alternatives – Alignments

## Alternative 2 – Marlboro Street



# Alternatives Comparison

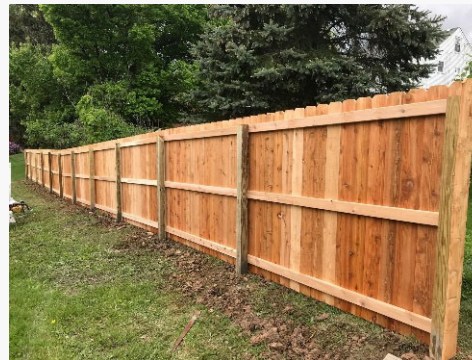
## Rating Criteria - Alignment Alternatives

| Criteria:                                       | Accessibility | Connectivity | User Safety | Property Impacts & ROW | Stormwater and Water Quality | Costs | Visual Impacts to Abutters | Trail Character | Overall |
|---|---------------|--------------|-------------|------------------------|------------------------------|-------|----------------------------|-----------------|---------|
| No Build  | ●             | ●            | ●           | ●                      | ●                            | ●     | ●                          | ●               | ●       |
| Railroad Corridor Alignment                     | ●             | ●            | ●           | ●                      | ●                            | ●     | ●                          | ●               | ●       |
| Alternative 1 - Chapman Road                    | ●             | ●            | ●           | ●                      | ●                            | ●     | ●                          | ●               | ●       |
| Alternative 2 - Marlboro Street Complete Street | ●             | ●            | ●           | ●                      | ●                            | ●     | ●                          | ●               | ●       |

● - Negative   ● - Neutral   ● - Positive



# Screening





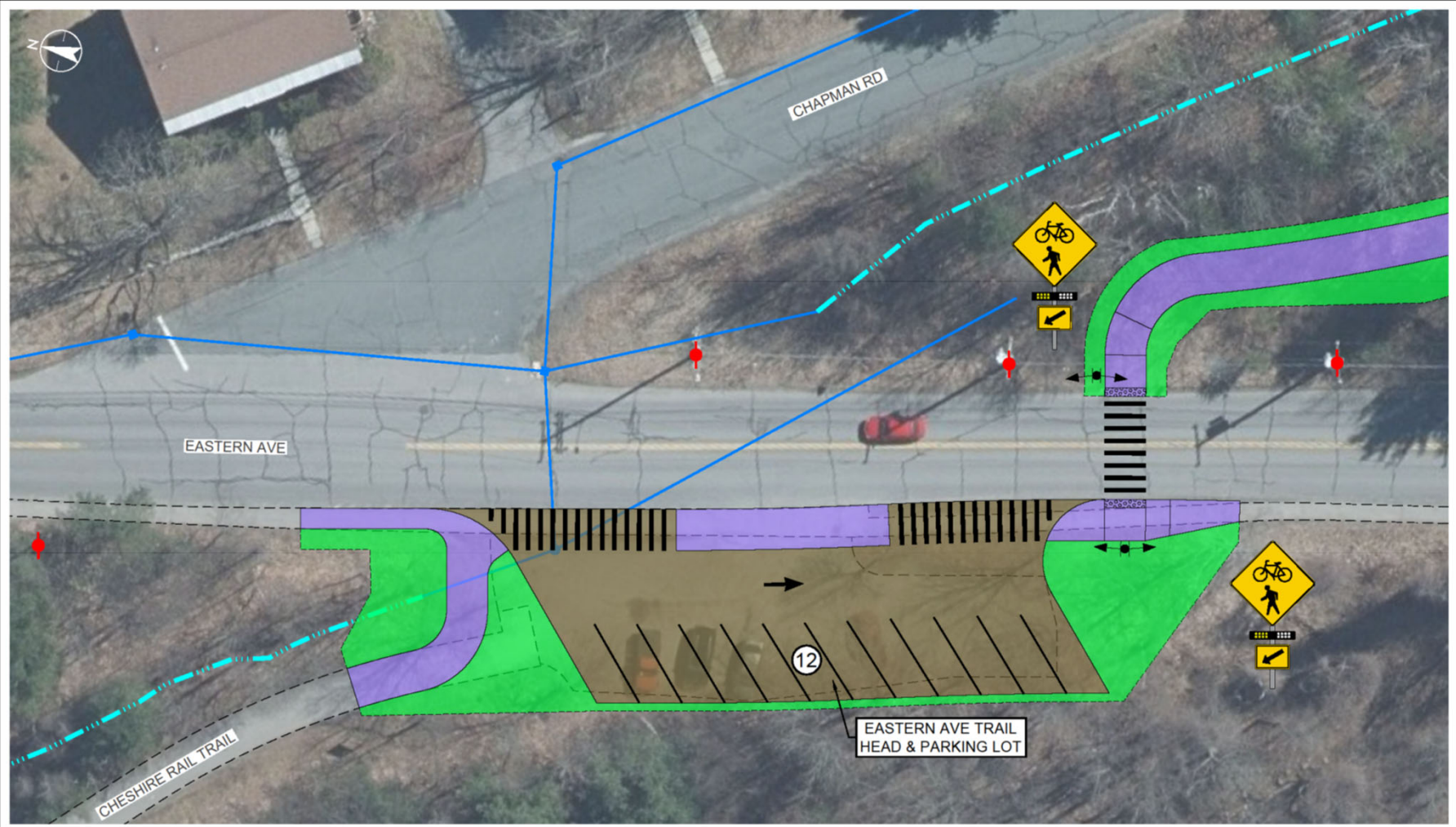
# Alternatives Comparison

## Rating Criteria - Screening

| Criteria:                     | Cost | Maintenance | Aesthetics | Privacy | Security | Overall |
|-------------------------------|------|-------------|------------|---------|----------|---------|
| No Build                      | ●    | ●           | ●          | ●       | ●        | ●       |
| Landscaping                   | ●    | ●           | ●          | ●       | ●        | ●       |
| Chain Link with privacy slats | ●    | ●           | ●          | ●       | ●        | ●       |
| Split Rail/Post and Rail      | ●    | ●           | ●          | ●       | ●        | ●       |
| Stockade/Shadowbox            | ●    | ●           | ●          | ●       | ●        | ●       |

● - Negative   ● - Neutral   ● - Positive

# Trailhead and Crossing



CITY OF KEENE, NH  
 TRANSPORTATION HERITAGE TRAIL PROJECT  
 JANUARY 24, 2024

| LEGEND |                                    |
|--------|------------------------------------|
|        | EXIST. UNDERGROUND DRAINAGE SYSTEM |
|        | EXIST. DRAINAGE DITCH              |
|        | EXIST. TRAIL / SIDEWALK            |
|        | PROP. TRAIL / SIDEWALK             |
|        | PROP. PARKING LOT                  |



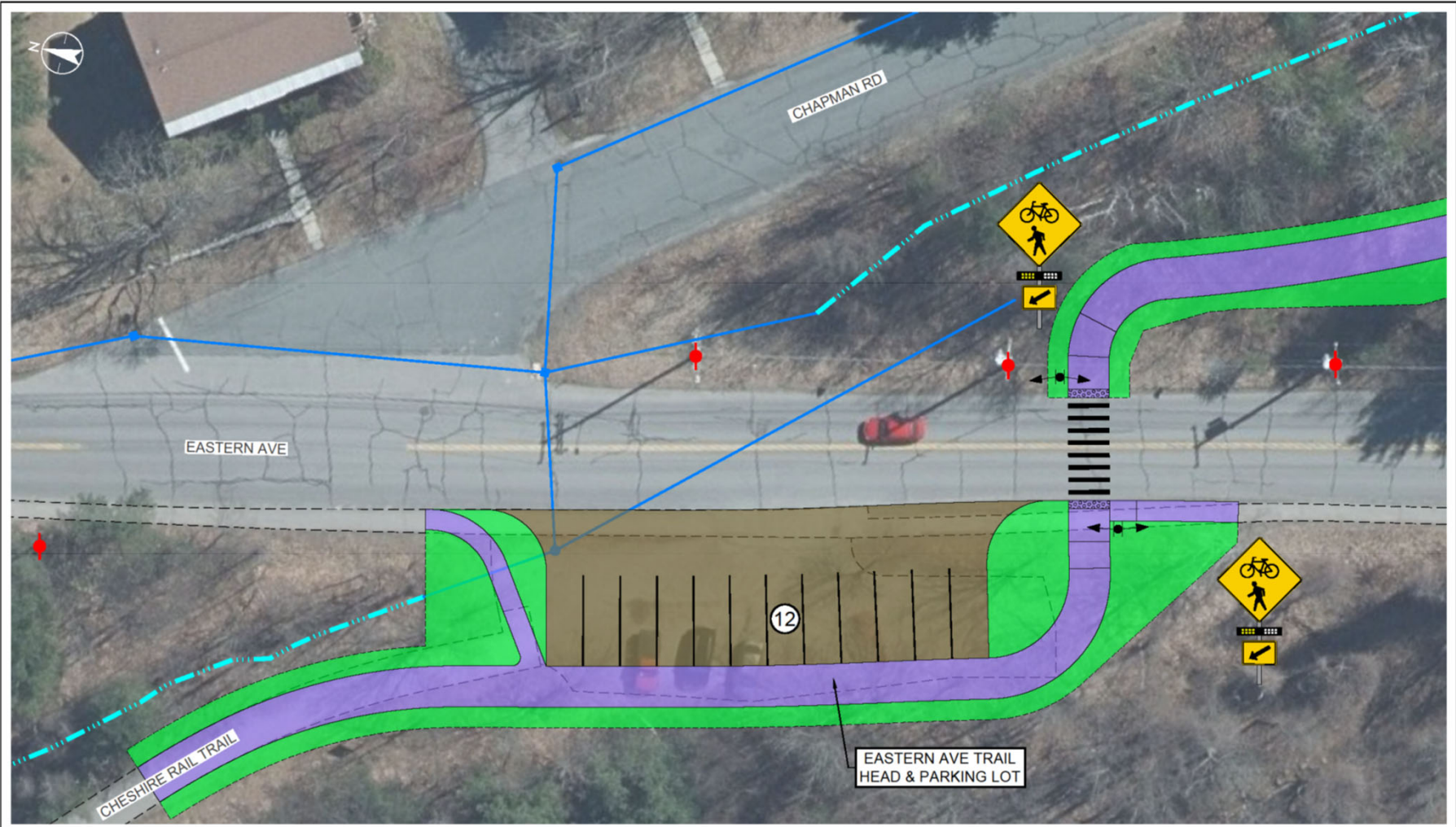
EASTERN AVE  
 TRAIL CROSSING  
 ALTERNATIVE - 1

SCALE: 1" = 10'





# Trailhead and Crossing



CITY OF KEENE, NH  
TRANSPORTATION HERITAGE TRAIL PROJECT  
JANUARY 24, 2024

**LEGEND**

- EXIST. UNDERGROUND DRAINAGE SYSTEM
- - - EXIST. DRAINAGE DITCH
- EXIST. TRAIL / SIDEWALK
- PROP. TRAIL / SIDEWALK
- PROP. PARKING LOT

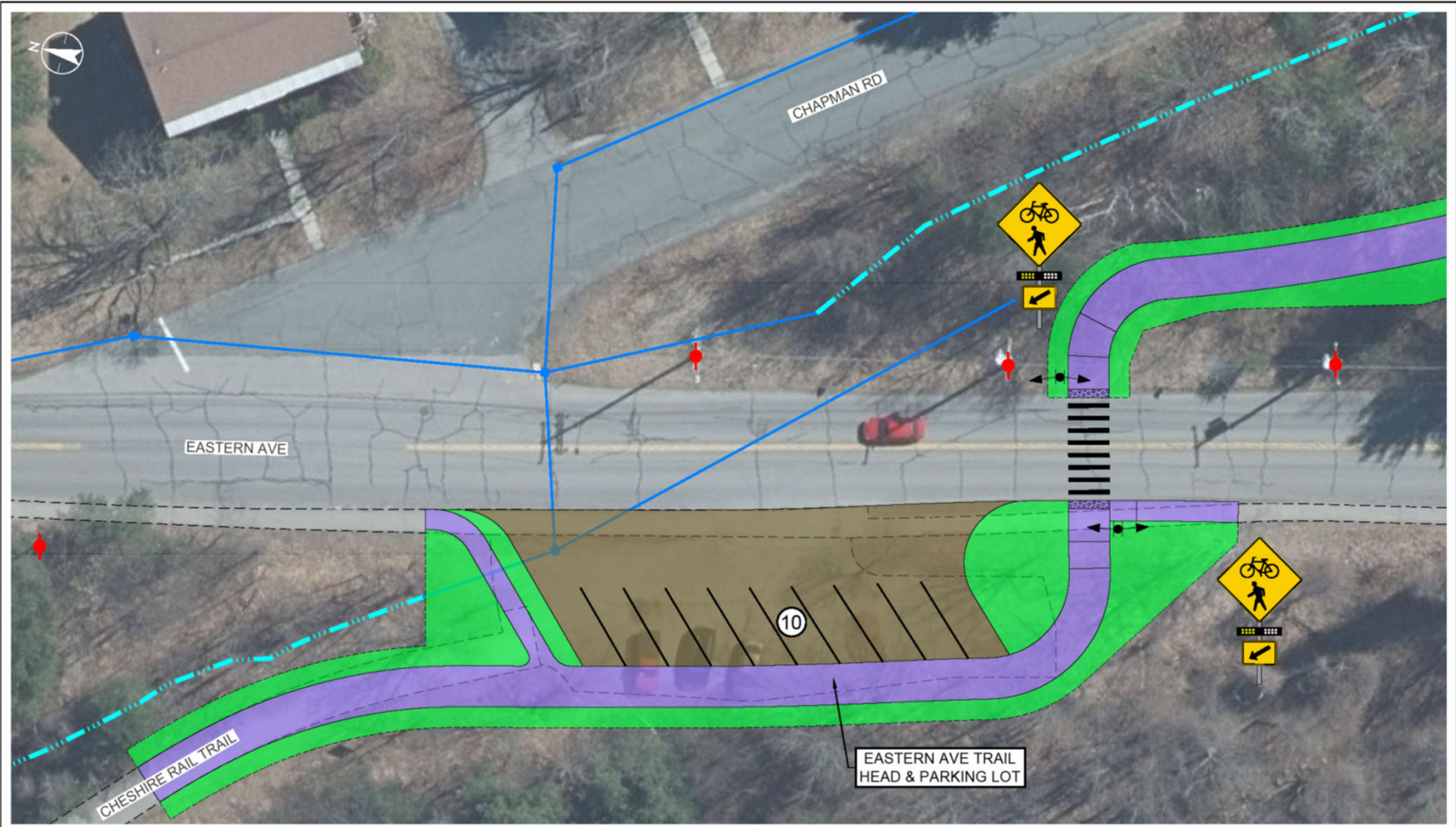


EASTERN AVE  
TRAIL CROSSING  
ALTERNATIVE - 2

SCALE: 1" = 10'




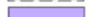



# Trailhead and Crossing



CITY OF KEENE, NH  
TRANSPORTATION HERITAGE TRAIL PROJECT  
JANUARY 24, 2024

**LEGEND**

-  EXIST. UNDERGROUND DRAINAGE SYSTEM
-  EXIST. DRAINAGE DITCH
-  EXIST. TRAIL / SIDEWALK
-  PROP. TRAIL / SIDEWALK
-  PROP. PARKING LOT



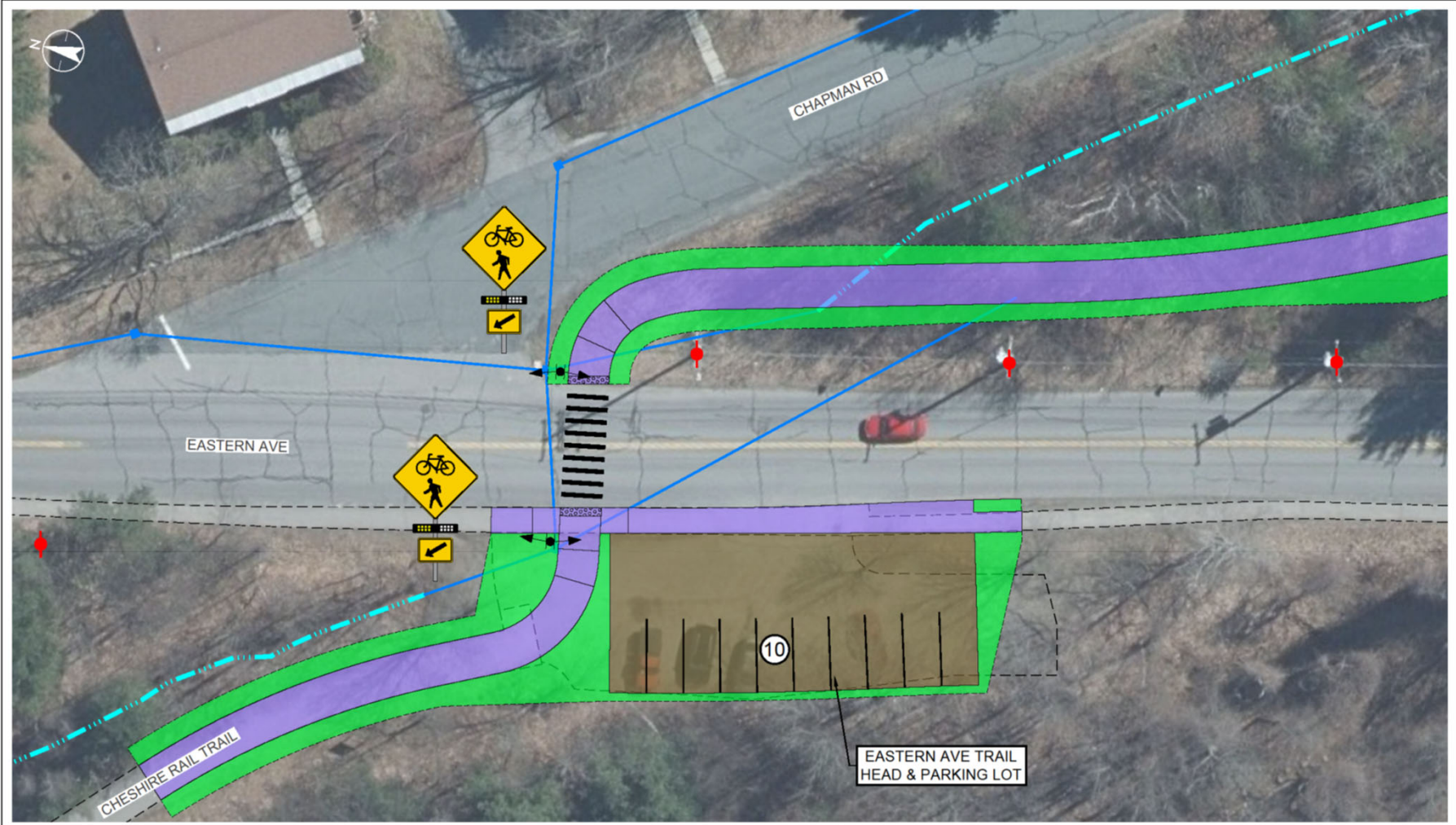
EASTERN AVE  
TRAIL CROSSING  
ALTERNATIVE - 2A

SCALE: 1" = 10'





# Trailhead and Crossing



CITY OF KEENE, NH  
 TRANSPORTATION HERITAGE TRAIL PROJECT  
 JANUARY 24, 2024

| LEGEND |                                    |
|--------|------------------------------------|
|        | EXIST. UNDERGROUND DRAINAGE SYSTEM |
|        | EXIST. DRAINAGE DITCH              |
|        | EXIST. PAVED TRAIL / SIDEWALK      |
|        | PROP. PAVED TRAIL / SIDEWALK       |
|        | PROP. PARKING LOT                  |



EASTERN AVE  
 TRAIL CROSSING  
 ALTERNATIVE - 3

SCALE: 1" = 10'



# Alternative Comparison

## Rating Criteria - Trailhead and Parking

| Criteria:     | User Safety | Parking Capacity | Vehicle Access | Property Impacts & ROW | Stormwater and Water | Overall |
|---------------|-------------|------------------|----------------|------------------------|----------------------|---------|
| No Build      | ●           | ●                | ●              | ●                      | ●                    | ●       |
| Alternative 1 | ●           | ●                | ●              | ●                      | ●                    | ●       |
| Alternative 2 | ●           | ●                | ●              | ●                      | ●                    | ●       |
| Alternative 3 | ●           | ●                | ●              | ●                      | ●                    | ●       |

● - Negative    ● - Neutral    ● - Positive



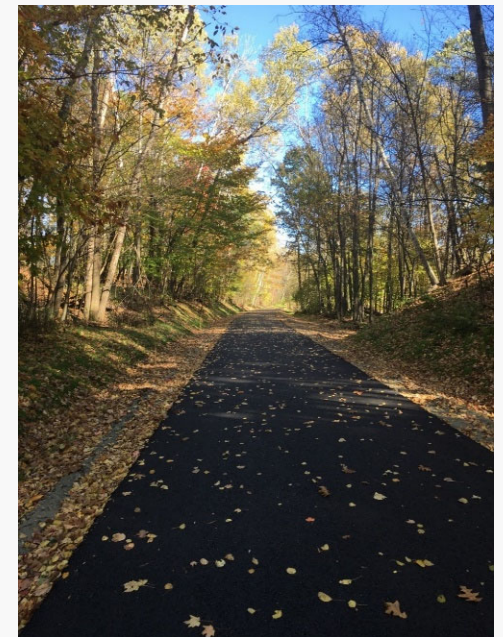
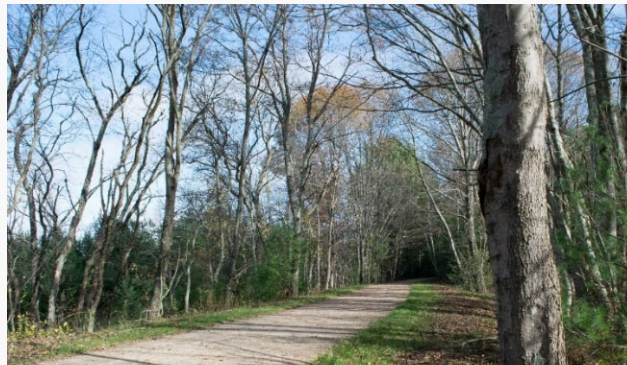
# Trail Surface Alternatives

## Trail Surface

- Stone Dust
- Pavement

## Considerations

- Cost (15 to 20% premium for pavement)
- Topography/Drainage
- Maintenance
- Trail Use
- Pedestrians / ADA
  - Trail Grades / Cross-Slopes



## Rating Criteria - Surfaces

| Criteria:  | Cost | Maintenance | User Experience | Overall |
|------------|------|-------------|-----------------|---------|
| Stone Dust | ●    | ●           | ●               | ●       |
| Pavement   | ●    | ●           | ●               | ●       |

● - Negative   ● - Neutral   ● - Positive

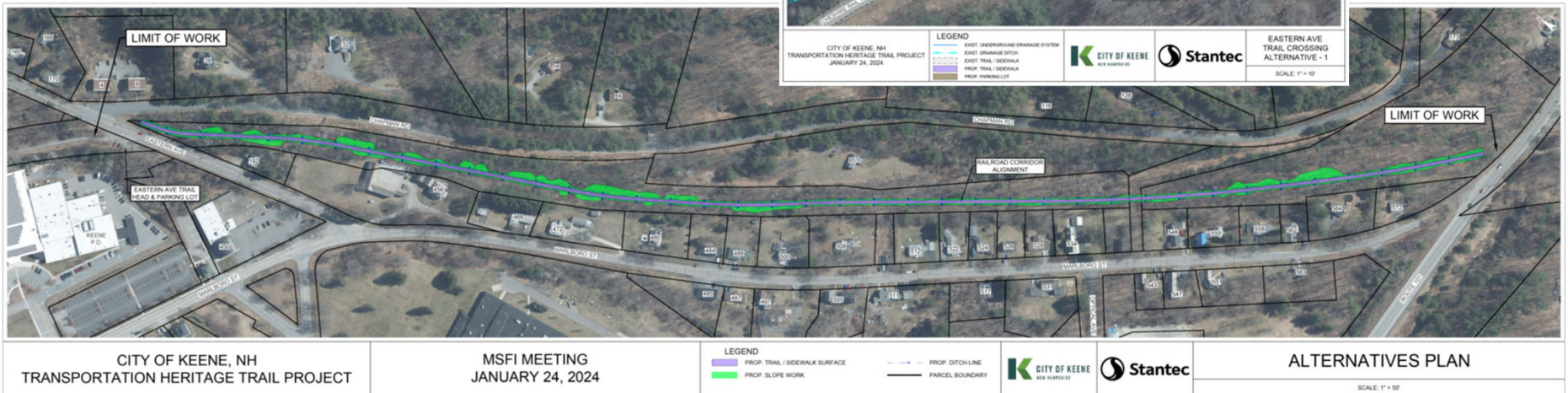
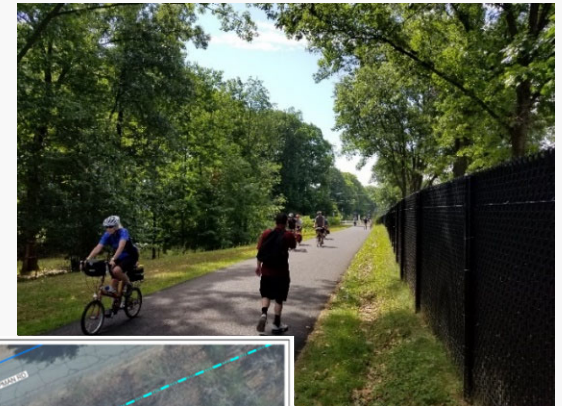
# Project Schedule / Next Steps

- Engineering Study Phase
  - Winter 2024
- Preliminary Design Phase
  - Spring/Summer 2024
- Permitting
  - Fall 2024
- Final Design / Bid Documents
  - Fall 2024/Winter 2025
- Right of Way Process
  - Spring 2024 to Winter 2025
- Construction Phase
  - Summer 2025



# Summary Recommendation

- Trail Alignment
  - Rail Corridor
- Screening
  - Chain Link with slats
- Trailhead
  - Alternative 1
- Surface Materials
  - Stone Dust



Questions?